



FREE!

Issue 417.1
10 February 2025

PLEASE note there may be some images of deceased persons within this publication.

Rain event ongoing as recovery efforts are renewed



ABOVE: Senator Jenny McAllister (right) at the LDMG meeting.
BELOW: The BOM picture at 5am this morning – rain is expected to be ongoing until Wednesday morning.

The electricity is back, schools are open, most services have been restored and road and other repairs are underway.

But Palm Island is still one of several districts included in a Severe Weather Warning for Heavy Rainfall, according to the Bureau of Meteorology website as of 5am this morning.

The heavy rainfall is expected start soon and continue “early this week” until Wednesday.

Palm Island Mayor and Local Disaster Management Group (LDMG) chair Alf Lacey said residents should sit tight and stay safe.

“This is certainly a bigger, more extended weather event than we have seen for some years,” he said.

“Council have had some problems, with our offices being flooded and just moving around the island, the same as everyone else, but we are doing our best.

“If you don’t have to leave your home, then don’t.”

Mayor Lacey said he welcomed a visit by Federal Disaster Minister Senator Jenny McAllister last week.

“The Minister had a good opportunity to see the worst of the damage that had been done up to then,” he said.

“She also went to the school, to see the community support there, and sat in on an LDMG meeting.

“She said the Prime Minister was also in Townsville to announce their support for those who needed help throughout this current rain event.”



SEE INSIDE FOR MORE!

RESIDENTS ARE REMINDED TO CONSERVE WATER AND TO REPORT ANY HOUSEHOLD LEAKS TO THE COUNCIL WATER SUPPLY OFFICER.

ALL COMMUNITY RESIDENTS ARE REMINDED TO ASSIST COUNCIL BY:

- Turning off taps
- Reporting leaks
- Using buckets to wash cars
- Not allowing children to play with hose pipes
- **REPORT ANY LEAKS TO: 1800 808 107 OR 0747700200 DURING BUSINESS HOURS.**

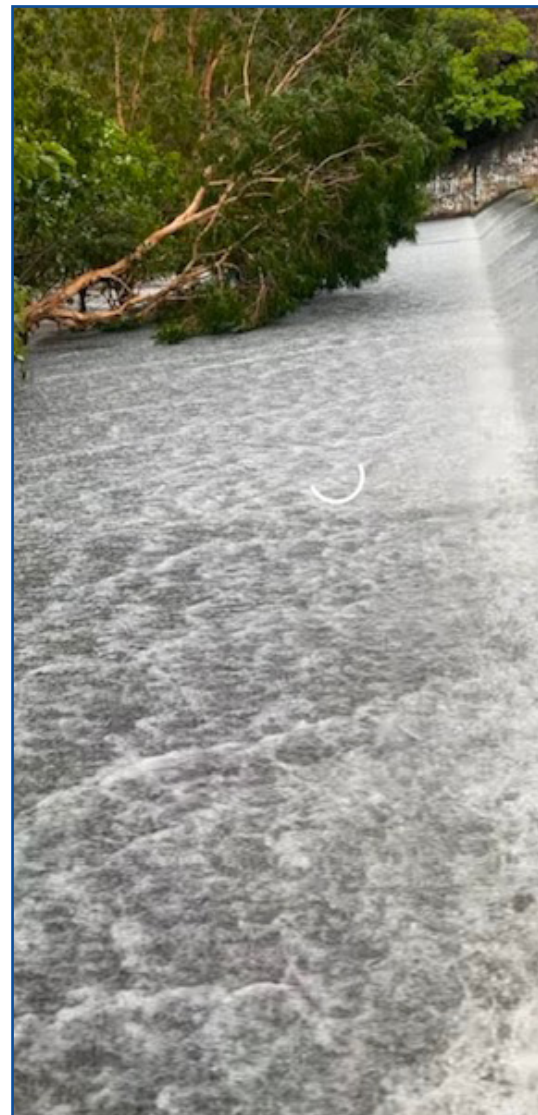
WE ASK FOR YOUR PATIENCE, WHILE REPAIRS AND ON-GOING TESTS ARE CARRIED OUT. ANY QUESTIONS, PLEASE GIVE OUR OFFICES A CALL ON 47 700 200 to speak with our staff.

Palm Island Local Disaster Management Group chair Mayor Alf Lacey has asked residents to continue to conserve water to give our water treatment plant time to produce the water to drinking quality standard and pump it to our water reservoirs that then send it to each home.

“We are still catching up with producing enough water after the power went out for a couple of days,” he said. “If we can all conserve water use for a few more days, then we should be back to normal operations by the end of the week. Thank you for your patience and contribution to making sure all of the community stays safe.”

LEFT: the old dam at close to capacity.

RIGHT: the new dam overflowing.



Help available for those who need it



The Personal Hardship Assistance is there to help those hardest hit by this ongoing rain event with upfront cash to cover their immediate needs, Federal Minister for Emergency Management Jenny McAllister (pictured) says.

“The Albanese Government continues to work with the Crisafulli Government to ensure affected communities are getting the immediate assistance they require,” she said.

Queensland Minister for Disaster Recovery Ann Leahy said the Personal Hardship Assistance Scheme featured a range of measures to help those in need.

“As well as the emergency assistance payments for essentials, we have unlocked funding to cover damaged household items, and if a resident has been without power for five consecutive days,” Minister Leahy said. “For those who were uninsured, we have income-tested grants to go towards the reconnection of essential services, and property structural repairs if a home has been damaged.”



Eligible residents can apply via Queensland Disaster support and recovery website or by calling the Queensland Community Recovery Hotline on 1800 173 349. SEE BACK PAGE FOR MORE...



ABOVE LEFT: Mayor Alf Lacey inspects damage to a footpath at the end of Wallaby Point Road.

ABOVE RIGHT: Damage to footpaths at Butler Bay

BELOW: Our council crews are out at every opportunity to keep our community safe!



Wallaby Point Rd washout on Sunday.



LEFT: a coconut tree down on Halifax St caused issues for residents and hit powerlines. Our Council crews have since fixed the problem.



LEFT: Council crews were also quick to get on top of this stormwater drain at Butler Bay, now missing a log or two.



BELOW: Council crews again offering emergency assistance at Lodge Beach Harmon. A tree smashed into the roof and drain at Allan Palm Island's family home on Park Road.

BELOW: Council crews also jumped in to help Tane and Alison from Cairns Rope Access (CRA) contractors, facilitated by Transport & Main Roads, to secure the Doctor Point land slip on Farm Road.



Back to 'normal'



Council has a new rubbish truck that looks like this

The rubbish bins now get picked up from the side, here

You need to put the bins to the kerb like this



	MONDAY	TUESDAY	WEDNESDAY	THURSDAY	FRIDAY
07:30AM – 07:45AM	VEHICLE PRE-START CHECK	VEHICLE PRE-START CHECK	VEHICLE PRE-START CHECK	VEHICLE PRE-START CHECK	VEHICLE PRE-START CHECK
07:45AM – 10:00AM	RODEO GROUND and KITCHENER BLIGH	SUNDOWNER RIDGE and BUTLER BAY	RODEO GROUND and KITCHENER BLIGH	SUNDOWNER RIDGE and BUTLER BAY	HARD WASTE ACROSS ISLAND
10:00AM – 10:30AM	SMOKO	SMOKO	SMOKO	SMOKO	SMOKO
10:30AM - 12:00PM	SOLOMON, COCONUT GROVE and FARM	BUSINESSES and GOVERNMENT-SHOPS-RETAIL STORE, SUNSET SNACK FOODS, PALM SERVO, HOSPITALS-PRIMARY HEALTH, JPHS BINS, JETTY PRECINCT, PARKS, SPORTS FIELDS	SOLOMON, COCONUT GROVE and FARM	BUSINESSES and GOVERNMENT-SCHOOLS, DAYCAR, DEPT. AGENCIES-CORRECTIONS, HOUSING, PAROLE, PCYC	HARD WASTE ACROSS ISLAND
12:00PM – 13:00PM	LUNCH	LUNCH	LUNCH	LUNCH	LUNCH
13:00PM – 16:30PM	MISSION - BOTTOM END, COOKTOWN SUBURB, MOSSMAN STREET, TOP END- HALIFAX RD, PUTTABURRA LN, BABINDA STREET, GRIBBLE ST, SAILOR ST, STANLEY LANE, PARK RD, COUTTS LANE, CREEK ROAD, BOTTLETREE LN,	BUSINESSES and GOVERNMENT-SCHOOLS, DAYCARE, DEPT AGENCIES-CORRECTIONS, HOUSING, PAROLE, PCYC	MISSION	BUSINESSES and GOVERNMENT-SHOPS-RETAIL STORE, SUNSET SNACK FOODS, PALM SERVO, HOSPITALS-PRIMARY HEALTH, JPHS BINS, JETTY PRECINCT, PARKS, SPORTS FIELDS	WORK AT TRANSFER STATION
16:30PM – 17:00PM	CLEAN VEHICLE and REFUEL	CLEAN VEHICLE and REFUEL	CLEAN VEHICLE and REFUEL	CLEAN VEHICLE and REFUEL	CLEAN VEHICLE and REFUEL



Palm Island's rubbish collection service has returned to normal, as per the timetable above.

Pictured above are whitegoods which were damaged by last week's rain waiting the next hard rubbish collection.

REMEMBER after a prolonged power outage:

- Keep the refrigerator and freezer door closed as much as possible.
- Throw out refrigerated food if it's been left unrefrigerated or above 5°C (not cold) for more than four hours.

- Throw out frozen food from freezers after 24 hours if the freezer is half-full, or after 48 hours if the freezer is full.
- If frozen food has partially thawed, do not re-freeze.
- Eat as soon as possible or throw out.

Tropical Public Health Unit

Protect yourself from melioidosis

- Wear shoes during the wet season
- Wear gloves when working outside
- Wear a mask when using a high pressure hose
- Stay indoors during storms
- Take it easy with alcohol



What is 'Melioidosis'?

- ♦ A disease caused by the bacterium *Burkholderia pseudomallei*
- ♦ Humans can become infected through contact with contaminated soil and surface waters (especially through skin abrasions/wounds); inhalation of contaminated dust/water droplets; and ingestion of contaminated water

Person-to-person transmission is rare

Persons with underlying diseases or immunosuppression are the high risk groups

Preventive measures:



Clean cuts or grazes and cover with waterproof dressings



Wear appropriate protective clothing or footwear when participating in activities with possible contact with soil or waters, and wash hands afterwards



Avoid contact with contaminated soil



Observe personal and food hygiene and avoid drinking raw water



Palm Island
COMMUNITY COMPANY

Palm Island Community Company will host Community Recovery Hubs in the mall this week.

PICC have been engaged to deliver social and emotional wellbeing support, referral services and administrative support from today until Friday from 8:30am – 4pm.

Food boxes and cleaning products will also be available from the Hub this week as well.

Please also note the PICC health service telephones have returned to normal operation.

All other PICC services have also returned to normal.

Message from Palm Island Barge Service:

Palm Island Barge Service will be operating a service on Tuesday 11 February from Palm to Townsville.

•Local vehicles are welcome to get on but will need to book through the Palm Depot: 0428 778 721.

There will only be four spots (small vehicles only).

Drivers, and any passengers would not be permitted to travel with the vehicles as we are restricted by our vessel's operational codes when traveling in open waters – they would need to take the Sealink ferry back to Townsville and pick their vehicles up from Pacific Marine Group's (PMG) depot when our barge arrives at 1pm on Tuesday (11-15 Sandspit Drive, South Townsville).

PMG will not store the vehicles.

Similarly, if wanting to book freight from Townsville to Palm we are able to do this as well.

Office phone lines are ones are not working yet, and our staff are unable to attend the offices unfortunately.

RIGHT: Ergon crew arriving by barge last week.



Assistance for residents of Palm Island



Activated locations: entire LGA

If you are suffering hardship or require emotional support as a result of the North and Far North Tropical Low, help is available. You may be eligible for financial or other assistance to help you get back on your feet.

People are encouraged to apply for financial assistance grants online at www.qld.gov.au/DisasterHelp or by calling the Community Recovery Hotline on 1800 173 349.

When completing grant applications online, please ensure your personal details are entered exactly as they appear on your driver's licence (e.g. spelling of your name) and Medicare card. If you have dependants, list them in order as stated on your card.

State and Commonwealth Grants

Assistance provided through the jointly-funded Commonwealth-State Disaster Recovery Funding Arrangements (DRFA).

Emergency Hardship Assistance[^]

\$180 per person (up to \$900 for a family of five or more) for people who are unable to meet their immediate essential needs for temporary accommodation, food, essential clothing and medication. It can take up to five days for payments to reach your bank account.

Essential Services Hardship Assistance[^]

\$150 per person (up to \$750 for a family of five or more) for people who have experienced the loss of one or more essential services for more than five days. **This grant will only be made active after five days without services.**

Essential Household Contents Grant ^{**}

One-off payment for households who are uninsured or unable to claim insurance as a contribution towards replacing or repairing essential household contents.

Up to \$1,765 for single adults and up to \$5,300 for couples/families.

*Income Test

Your gross (before tax) weekly income must be less than or equal to:

- individual adult: \$1,179 (\$61,322 per year)
- couple: \$1,630 (\$84,782 per year)
- sole parent, one child: \$1,632 (\$84,842 per year)
- couple, one child: \$2,021 (\$105,125 per year).

For each additional child, add \$391 per week. For each dependent adult, add \$451 per week.

[^]eligibility criteria applies

More information



Apply online at:
www.qld.gov.au/DisasterHelp



Call the Community Recovery Hotline
on 1800 173 349



Scan the QR code to access more
information about this disaster event
or visit the website referenced above



THE NEXT *Palm Island Voice* DEADLINE*
(Issue 418*) will be Thursday 13 February
for publication on Monday 17 February



The *Palm Island Voice* is published *weekly if we have paid advertising, or otherwise fortnightly by the Palm Island Aboriginal Shire Council. For advertising rates and/or more information contact the Editor on 0419 656 277 or at howeschowes@gmail.com Members of the Palm Island community and local organisations are welcome to submit birthdays, community information, pics, yarns and letters to the Editor, Christine Howes. You can also follow us on Facebook! We have 2,900 'likes' and more than 3,000 followers! The *Palm Island Voice* is free and online at <http://www.chowes.com.au>

Operating Hours for Palm Island Council are Monday–Friday 8am – 5pm
If you have any questions please contact Reception on 4770 1177 or 4770 0200
Palm Island Aboriginal Shire Council has 5,400 'followers' on Facebook!!!