



Travel restrictions in place

The Palm Island Local Disaster Management Group (LDMG) has approved travel restrictions to the community after the Premier's State Disaster Declaration on Sunday.

"From midnight on Wednesday [25 March] night, travel to Palm Island will be restricted," LDMG interim-Chair Deputy Mayor Roy Prior (*pictured right*) said.

"That means only people involved in the provision of essential services in the community, and people undertaking essential medical travel as provided by Queensland Health will be allowed here.

"We recognise that many members of our community may be vulnerable to corona virus therefore these measures are necessary to try and ensure the ongoing health, wellbeing and safety of our residents in these challenging times.

"It is understood some of these difficult decisions are contrary to our culture, however the concerns surrounding corona virus and



the possible impact on our community are really important at this time".

For more information see the Council's website at www.palmcouncil.qld.gov.au

Townsville Hospital & Health Service says:

Protect our Elders

Worse than flu



Kids and sick people: stay away from Elders



If older people get crook or fever, go to the clinic. You might need a test or stay in hospital.

Don't kiss babies!



Get elders ready and strong - with a check-up for their health and medicines - Elders should eat healthy food, like veggies



Get your flu and pneumo needles soon



Everybody should stop smoking

Kids need calm and cool answers

Elbow bumps in lieu of high-fives, segregated lunchtimes and hyper-hand hygiene are all a part of our children's new reality in response to Covid-19.

But while kids are seemingly adapting well to the changes, child development experts say adults need to be increasingly mindful of their own reactions to the pandemic and take care when explaining the situation to children.

Early childhood education expert, University of South Australia Associate Professor Victoria Whittington, said the

way a parent, teacher, or significant adult responds in a crisis can have significant implications for a child.

"Children need calm and stable parents and teachers, especially in uncertain times," she said.

"There's no doubt, we're all feeling a bit unsure at the moment, but panicking and worrying in front of your kids

will not improve the situation.

"Children take cues from their key attachment figures -- their mums, dads, and teachers -- so if they hear or see them worrying, they'll tend to take on this worry too.

"Talking calmly, kindly and patiently with children will help them learn what they need to know in a considered way, without extra angst."

Museum of Underwater Art consultations on hold

In light of current uncertainties around Coronavirus and the high levels of sorry business on Palm island,

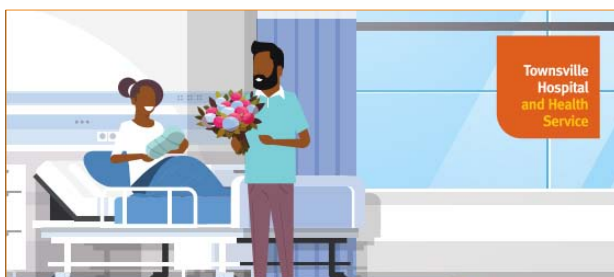


CORROBOREE



DREAMTIME

community consultations on the Palm Island installation of the Museum of Underwater Art will be postponed until May 31 at which time we will review the situation.



Our visiting hours have changed

To keep our staff and patients safe, visiting hours for **all** Townsville Hospital and Health Service facilities from Wednesday, 25 March, are:

**10am - 11.30am
5pm - 7pm**
One visitor per patient

Further restrictions may apply to critical care areas. Please speak to our nursing staff if you have questions.

Thank you for your cooperation



COMMUNITY NOTICE

As per the announcement from the Prime Minister, the Palm Island Library is CLOSED until further notice.

Palm Island views...



Pic thanks to Andy Kyle-Sailor

Bwngcolman Community School & St Michael's Catholic Primary School will remain open, as per National Health advice. Parents or carers may choose to keep children at home and have been asked to do so if their child is unwell. Any child found to be sick on arrival will be sent home. Meanwhile, here is some good news from St Michael's School....



ABOVE: Year 6 led us in prayer. We prayed that we would care for our Earth and all the people of the world as Pope Francis asked us to in his letter, *Laudato Si*.



ABOVE: Year 4 went to Small Bay for a picnic as a reward for reaching 2000 Class Dojo points! They proved they have the skills to find themselves a feed – but were grateful for the lunch Mr Lance packed for them!

Restrictions have been applied in the interest of the ongoing health, wellbeing and safety of our residents.

For other information about how this issue is affecting our community, please visit www.palmcouncil.qld.gov.au

For information about Corona virus including symptoms and prevention, please visit www.health.qld.gov.au



POSITION VACANT: RANGER MANAGER

Jabalbina Yalanji Aboriginal Corporation (Jabalbina) wishes to engage a full time Ranger Manager based in Mossman to oversee Mossman, Ayton and Shipton's Flat regions. Jabalbina is the Eastern Kuku Yalanji People's Registered Native Title Body Corporate, registered Cultural Heritage Body and trustee of the Jabalbina Yalanji Land Trust. The Ranger Manager is responsible for overseeing the Ranger program and implementing work plans that align with Jabalbina Indigenous Protected Area plans. The role requires excellent leadership skills, an ability to work with a diverse range of stakeholders and good written and oral communication skills.

How to Apply

Please contact Robyn Frahn at HR Dynamics for an Application Package at recruitment@hrdynamics.com.au

Applications close Monday 30th March

In response to Coronavirus and in support of the Palm Island Community, SeaLink will provide an unaccompanied freight service for ESSENTIAL HOUSEHOLD SUPPLIES.

This freight service will only operate whilst travel restrictions are in place. Freight items will be strictly managed and no commercial freight will be accepted during this time. Conditions of unaccompanied freight:

- Essential items only (food, medical, cleaning, personal items). Note there is limited cold storage available, as per our normal freight processes;
- Limit of 4 items per person;
- All food items must be sealed/wrapped so no chemicals can enter these goods (SeaLink will be chemically treating all freight items for COVID 19);
- All items must be clearly labelled with the name of the person collecting the item; and,
- **SeaLink accepts no responsibility for unclaimed items, someone must be available at Palm Island to meet the freight as items will be left on the jetty at your own risk.**

For more and up-to-date information on Palm Island services check <https://www.sealinkqld.com.au/palm-island-service-updates>

OUR NEXT DEADLINE (Issue 297) will be Thursday 2 April for publication on Thursday 9 April!

The **Palm Island Voice** is published fortnightly by the Palm Island Aboriginal Shire Council and edited by Christine Howes. Members of the Palm Island community and local organisations are welcome to submit birthdays, community information, pics, yarns and letters to the Editor. You can follow us on Facebook! We have 2,554 'likes'!

The **Palm Island Voice** accepts paid advertising. For rates and/or more information contact the Editor on 0419 656 277 or at chowes@westnet.com.au

The **Palm Island Voice** is free and online at <http://www.chowes.com.au>

Operating Hours for Palm Island Council are Monday–Friday 8am – 5pm

If you have any questions please contact Reception on 4770 1177 or 4770 0200

Palm Island Aboriginal Shire Council has 3,605 'likes' on Facebook!!!



The **Palm Island Voice** is free & online at www.chowes.com.au/newsletters/palmisland