



Numbers boost for SES



Palm Island Emergency Services have received a welcomed increase in its membership after working closely with Campbell Page, the SES and Rural Fire Service to take advantage of the work for the dole program.

Campbell Page participants can join the SES and Rural Fire as part of their job plan agreement and receive emergency service training in both areas.

SES trainer Ian Neale said it was a win-win situation.

“The the island gets a larger and more capable emergency service group, and the members get some lifelong skills and formal qualifications in Certificate II and III in Public Safety.

“This is all while undertaking an essential community service which may lead to employment opportunities.

“The project also helps us provide better options for training for our other volunteer members.”



He said previous SES and Rural Fire members were encouraged to parade on Monday nights to discuss options for participating in the additional training being provided.

Pictured above are Craig Inkerman, Dave Doyle and Stanley Izzard. Words & pics thanks to Paul Cannon

Council hosts conference for women



The first women's conference held by the Palm Island Aboriginal Shire Council had a huge turnout with some great outcomes, participants said. Women from different organisations such as PICC, Solas, Hospital, Rehab and Justice Group were all in attendance. High on the agenda was health, and particularly diabetes. Pics thanks to Sondra Gorringer.



Townsville meeting puts youth suicide on the agenda

More than 200 people looked at the issue of youth suicide at a meeting in Townsville earlier this month.

Community activist Professor Gracelyn Smallwood said the meeting was called by the local Human Rights Committee to highlight the widening gap and youth suicide.

"There is literally billions of

dollars going to mostly white services," she said. "Black services need to be culturally competent.

"Organisations and Government who receive Indigenous funding must start to be accountable and transparent, as well as collaborate with other providers."

She said the key issue was why was Indigenous youth suicide across

Northern Australia the highest in the world.

"Why is poverty and unemployment not being addressed?" Professor Smallwood said.

"We believe the meeting has been a success as the mob receiving our earmarked funds have been put on notice of their transparency and accountability."



Palm Island, thanks for reducing your water usage

“We can’t predict the weather, particularly for Palm, and it’s the same for all the Shires throughout the north, we are drought-affected until we get more good solid rain, such as we have seen over the past week or so,” Cr Lacey says.

“I want to thank the residents for adhering to the water restrictions and getting involved with the Water Wise campaign,” he said.

“The scenario now is the desalination plant, which is not only for our drinking supply but also for treating our sewer water.

“We’ll have to maintain

our vigilance on the water restriction in the community, especially given that Palm Island’s population is growing.

“It will take everyone on the Island to be involved.”

CEO Ross Norman said the Island had definitely had some good rainfall over the past week.

“On Thursday last week Palm received 107mm and on Friday

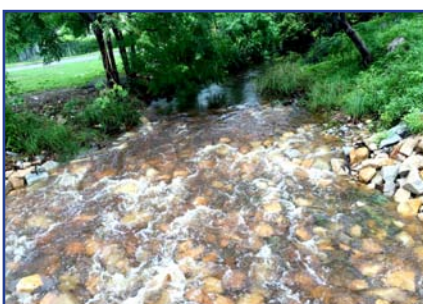
another 45mm,” he said.

“Silver Creek is flowing and there is a good quantity of water flowing into Francis Creek dam.

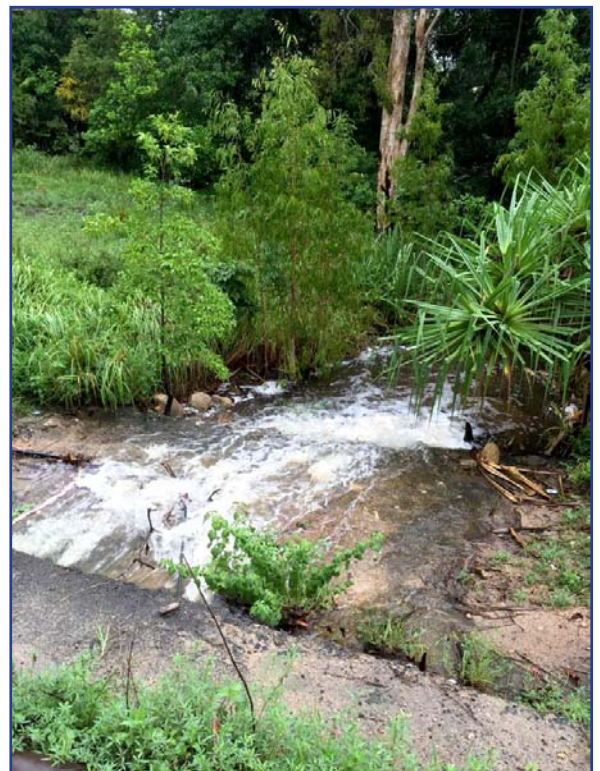
“There has been some water flowing into Solomon dam (main dam) but not in the same quantities as Francis.

“However, both dams are still way below capacity.”

For more information see the flyers on the notice boards and available from Council Reception



Pics from last Sunday with thanks to Merlene Robertson. Above: The dam getting it’s share of the rain; Left: Palm Valley Creek Right: Mill Creek.



PCYC ready to roll

Palm Island PCYC has said farewell to Branch Manager Brady Walmsley and welcomed new Relieving Branch Manager, Scott Pogan last week.

Scott will remain at the PCYC until the arrival of the new and permanent Branch Manager in April.

Scott has a background with children, sports, small communities and youth involvement, and looks forward to working with the community from the Palm Island PCYC over the next few weeks.

He said they were already working on their Easter School Holidays activity program, and looking forward to working with other agencies.

“We hope to offer discos, activities, arts, crafts and cultural heritage experiences and activities for our community,” he said.

“Once confirmed our Holiday Program will be circulated to the community with dates and locations of our activities.”

He said PCYC was also keen to recruit volunteers from within the community to support their activities

“We’re looking for volunteers in the area of community radio, youth and childcare,” Scott said.

“If you feel you have experiences or skills for an activity to support the

activity areas outlined above come to the PCYC or contact me on the number below.

“As PCYC we want to support and encourage myriad of activities through community engagement.”

Meanwhile, he said, the senior’s social indoor soccer and netball competitions started last Tuesday (8 March) and would be ongoing.

“Indoor Soccer will be held on Tuesday evenings with the Netball

Competition to be held on Thursday evenings,” he said.

“Both competitions run from 5:30–7:30pm and were “all age”, with children over 13 welcome to get involved.



"I heard last year's competitions were a great mix of teachers, health and hospital staff, tradies, justice, Police, Ambos, and keen community members getting involved.

"We are looking forward to having a good turnout for this year's competitions."

ALSO COMING UP...

Palm Island PCYC is holding a celebration of things cultural at 5pm on the afternoon of Monday 21 March to celebrate Harmony Day and Australia's cultural diversity.

"It's about inclusiveness, respect and a sense of belonging for everyone," Scott said.

"There will be activities, prizes, give-aways and a sausage sizzle BBQ for guests to enjoy. I hope to see everyone come out for some fun!"

For more information you can call Scott on 4770 1793 or drop into the PCYC and say 'giddy'.



FUN STARTS HERE

SOCIAL SOCCER
EVERY TUESDAY
5:30 PM - 7:30 PM

INDIGENOUS PROGRAMS
PCYC

**Mixed Teams, All Ages
Everyone Welcome
Friendly & Social
Come & have some fun!**

Location: Palm Island PCYC indoor court
Contact: Hunter Lloyd-Pugh
Indigenous Community Sport & Rec Officer
Phone: (07) 4770 1793

QUEENSLAND GOVERNMENT



FUN STARTS HERE

SOCIAL NETBALL
EVERY THURSDAY
5:30 PM - 7:30 PM

INDIGENOUS PROGRAMS
PCYC

**Social Senior
Mixed Netball
All Welcome**

Location: Palm Island PCYC indoor court
Contact: Hunter Lloyd-Pugh
Indigenous Community Sport & Rec Officer
Phone: (07) 4770 1793

QUEENSLAND GOVERNMENT



BOXING NEWS BOXING NEWS

A HEAT wave on Palm Island has affected the preparation of local boxers who are competing on the Sunstate Amateur Boxing League tournament card at Bohle Barn Hotel in Townsville this Saturday.

It is being organised by Scooter Hooper of the Art of Strength Club.

Hooper has been a big supporter of the Palm Club having travelled to the Island for the tournament last year.

Palm Island PCYC Boxing Club trainer Ray Dennis

said with temperatures in the high thirties in the past week, few boxers had been training.

"At this stage I think Patrick Clarke and Arona Miller will be fighting on the card and maybe a few others," he said.

Mr Dennis said Leelan

Sibley, who had shone for Palm Island during 2015, was training at Abergowrie College near Ingham.

"Leelan will fight under our club banner," he said.

The heat ensured no Palm fighters travelled to Charters Towers for Saturday's tournament last weekend.

Palm Island Voice



**Public &
Community Notices**



Don't forget!!!

The **DEADLINE** for the
next **NEXT PALM ISLAND
VOICE (200!!!)** is

Thursday 17 March

FOR PUBLICATION ON

Thursday 24 March

See our Facebook page for a full
list of Rates & Dates for 2016



**Operating Hours for
Council are Monday –
Friday 8am – 5pm**

If you have any
questions please
contact Reception on
4770 1177 or
4770 0200



Palm Island
Aboriginal
Shire Council
has 1,089
'likes' on
Facebook!!!

ADVERTISE!

Page Sponsorship: (1cm or 18pt high
banner across nominated page): \$120

Quarter A4 Page: \$250 + GST

Half A4 Page: \$350 + GST

Full A4 Page: \$550 + GST

Ads are to be booked by no later than
5pm on deadline day (see above) and all
material submitted no later than COB
the next day. Print approval required by
Monday COB.

SUBSCRIBE!

Individuals & Families (hard copy): \$30

Community & NGOs (hard copy): \$60

Government & Corporate (hard copy): \$120

All from now to 30 June 2016

Subscription rates vary according to
when the initial subscription is taken out
– eg if taken in January 2015 the rate will
be half of the full year to take it to July
2015.



**CATHY
FREEMAN
FOUNDATION**

JOIN THE CFF TEAM

ACTIVITIES COORDINATOR (part-time)

The Cathy Freeman Foundation helps Indigenous
children experience their potential in school, and
beyond.

We're looking for an Activities Coordinator to join
the CFF team to manage our Activities Program,
including after-school sport, sporting trips and
competitions.

For more information contact
Kelsey Youngblutt on 07 4770 1555
or email: kelsey@cathyfreemanfoundation.org.au

Applications close at 5pm on Fri 18 March

Army 'invasion' will be no match for Skipjacks

"We'll be bigger, stronger and faster this year..." these are the defining and confident words of Palm Island Skipjacks coach Alex Morgan about the looming rugby league showdown against Australian Army Thunder for the Bill Coolburra Memorial Shield next month.

"Looking forward to the clash, can't wait mate," he added.

It is expected a huge crowd of locals will be at the local football oval to support the lads – Palm Islanders are fanatical rugby league supporters and will be out in force for the game in which the stakes are high.

There will also be an invasion,

pardon the pun, of Army players, officials and supporters from the mainland.

Star forward Raoul Miller said the feeling amongst players was they could win in front of a home crowd.

"We will have a stacked side and I think we can win it," he said.

The stakes will be high as both sides have won four of

the eight previous encounters.

Before the game a memorial service will be held at the Palm Island cemetery in honour of Mr Coolburra.

A ferry will take visiting players, officials and Palm Islanders living on the mainland to the island for the match which will start at 11am on Thursday 14 April.

POSITIONS AVAILABLE

The following positions are currently open for application.

Palm Island Safe House

- 1 x Coordinator – full time
- 1 x Family Intervention Support Worker – full time
- 6 x Residential Support Workers – full time
- 2 x Residential Support Workers - casual

Safe Haven

- 1 x Coordinator – part time

Applications close Friday 18 March 2016

To be considered for this position, please submit to mmccann@picc.com.au:

1. A completed employment application form
2. Written response to the key selection criteria
(refer to selection criteria contained in the position description)
3. A copy of your resume

Please contact Mark McCann on 07 4421 4300, or email mmccann@picc.com.au, for a copy of the Employment Application Form and Position Description/Selection Criteria. Advice on the application process is available on request.





January							
Wk	Mo	Tu	We	Th	Fr	Sa	Su
53					1	2	3
1	4	5	6	7	8	9	10
2	11	12	13	14	15	16	17
3	18	19	20	21	22	23	24
4	25	26	27	28	29	30	31

February							
Wk	Mo	Tu	We	Th	Fr	Sa	Su
5	1	2	3	4	5	6	7
6	8	9	10	11	12	13	14
7	15	16	17	18	19	20	21
8	22	23	24	25	26	27	28
9	29						

March							
Wk	Mo	Tu	We	Th	Fr	Sa	Su
9	1	2	3	4	5	6	
10	7	8	9	10	11	12	13
11	14	15	16	17	18	19	20
12	21	22	23	24	25	26	27
13	28	29	30	31			

April							
Wk	Mo	Tu	We	Th	Fr	Sa	Su
13					1	2	3
14	4	5	6	7	8	9	10
15	11	12	13	14	15	16	17
16	18	19	20	21	22	23	24
17	25	26	27	28	29	30	

May							
Wk	Mo	Tu	We	Th	Fr	Sa	Su
17							1
18	2	3	4	5	6	7	8
19	9	10	11	12	13	14	15
20	16	17	18	19	20	21	22
21	23	24	25	26	27	28	29
22	30	31					

June							
Wk	Mo	Tu	We	Th	Fr	Sa	Su
22				1	2	3	4
23	6	7	8	9	10	11	12
24	13	14	15	16	17	18	19
25	20	21	22	23	24	25	26
26	27	28	29	30			

July							
Wk	Mo	Tu	We	Th	Fr	Sa	Su
26					1	2	3
27	4	5	6	7	8	9	10
28	11	12	13	14	15	16	17
29	18	19	20	21	22	23	24
30	25	26	27	28	29	30	31

August							
Wk	Mo	Tu	We	Th	Fr	Sa	Su
31	1	2	3	4	5	6	7
32	8	9	10	11	12	13	14
33	15	16	17	18	19	20	21
34	22	23	24	25	26	27	28
35	29	30	31				

September							
Wk	Mo	Tu	We	Th	Fr	Sa	Su
35					1	2	3
36	5	6	7	8	9	10	11
37	12	13	14	15	16	17	18
38	19	20	21	22	23	24	25
39	26	27	28	29	30		

October							
Wk	Mo	Tu	We	Th	Fr	Sa	Su
39						1	2
40	3	4	5	6	7	8	9
41	10	11	12	13	14	15	16
42	17	18	19	20	21	22	23
43	24	25	26	27	28	29	30
44	31						

November							
Wk	Mo	Tu	We	Th	Fr	Sa	Su
44	1	2	3	4	5	6	
45	7	8	9	10	11	12	13
46	14	15	16	17	18	19	20
47	21	22	23	24	25	26	27
48	28	29	30				

December							
Wk	Mo	Tu	We	Th	Fr	Sa	Su
48					1	2	3
49	5	6	7	8	9	10	11
50	12	13	14	15	16	17	18
51	19	20	21	22	23	24	25
52	26	27	28	29	30	31	

ENGAGEMENT DAY	LAND TRUST MEETING	ORDINARY MEETING
Tuesday 12 th January 2016	Wednesday 27 th January 2016	Wednesday 27 th January 2016
Tuesday 9 th February 2016	Tuesday 23 rd February 2016	Wednesday 24 th February 2016
Tuesday 8 th March 2016	Tuesday 22 nd March 2016	Wednesday 23 rd March 2016
Tuesday 12 th April 2016	Tuesday 26 th April 2016	Wednesday 27 th April 2016
Tuesday 10 th May 2016	Tuesday 24 th May 2016	Wednesday 25 th May 2016
Tuesday 8 th June 2016	Tuesday 28 th June 2016	Wednesday 29 th June 2016
Tuesday 12 th July 2016	Tuesday 26 th July 2016	Wednesday 27 th July 2016
Tuesday 9 th August 2016	Tuesday 30 th August 2016	Wednesday 31 st August 2016
Tuesday 13 th September 2016	Tuesday 27 th September 2016	Wednesday 28 th September 2016
Tuesday 11 th October 2016	Tuesday 25 th October 2016	Wednesday 26 th October 2016
Tuesday 8 th November 2016	Tuesday 29 th November 2016	Wednesday 30 th November 2016
Tuesday 13 th December 2016	Tuesday 20 th December 2016	Wednesday 21 st December 2016

Palm Island Aboriginal Shire Council
1 Main Street
PALM ISLAND Q 4816
Ph: 07 477 00200



ABN: 68 799 811 816
Website: www.piac.com.au

Public Holidays 2016

Friday 1st January 2016
 New Years Day

Tuesday 26th January 2016
 Australia Day

Friday 25th March 2016
 Good Friday

Saturday 26th March 2016
 Easter Saturday

Monday 28th March 2016
 Easter Monday

Monday 25th April 2016
 ANZAC Day

Monday 2nd May 2016
 Labour Day

Friday 3rd June 2016
 Strike 5⁷

Friday 10th June 2016
 Bwngolman Day

Monday 4th July 2016
 Annual Show Day

Friday 15th July 2016
 NAIDOC DAY

Friday 2nd September 2016
 Spring Festival Day

Monday 3rd October 2016
 Queen's Birthday

Sunday 25th December 2016
 Christmas Day

Monday 26th December 2016
 Boxing Day

Tuesday 27th December
 2016
 Additional Christmas Holiday