



Palm Island Voice



Your community

Your newspaper

**Issue 11.
1 February 2008**



Krause House Makes Way for More Housing

A new project is underway which will provide much needed accommodation for older residents on Palm.

The old teacher's house at Mango Ave has recently been pulled down to make way for development of this urgently needed additional housing.

It is expected three by two bedroom flats will be built and they will be designed to meet the needs of older people.

The Project is funded through Queensland Department of Housing Community Renewal project. Department of Public Works will be project managers for the project.

A construction date has not been set yet but

Council hopes work will commence in the first half of this year.

A large mango tree on the block will also need to be removed to make way for the new housing.

Timber which was still sound has been salvaged from the house. Council hopes these timbers might be used to develop a memorial of the original house.

Readers are advised this publication may contain the names and images of people who have passed away.

Published Fortnightly

In this Issue:

News and Events

New Housing	1-2
Ambulance Thefts and Vandalism	3&7
Back to School	4
Land Tenure	4
Senior Phase Expands	5
Kilo Busters Winners	6
PCYC Activities	6
Council Xmas Party	8&9
Community Bus	11

Regular Columns

Letters to Editor	10
Training	11
Birthdays, New Babies, In Memoriam	12
First Aid	13
Health News	14
Health Calendar	15
Notice Board	16

**Next Issue Out
15 February**

Council and State work toward delivering more accommodation on Palm Island



Above: Work underway on pulling down the old house
Top Right: Advice to Council was that although the building appeared sound it was not viable to either restore it or relocate it.
Bottom Right: Council's building team undertook the job pulling down the old house.

Publisher

Palm Island Aboriginal Shire Council
Main St, Palm Island QLD 4816
ABN 68 799 811 816

Editor

Catherine Lawler
Editorial Assistant

Alfred Clay

Contact Details

Telephone:
07 4770 0215
07 4770 1177

E-mail:

editor@piac.com.au

Printer

Palm Island Aboriginal Shire Council
Main St, Palm Island QLD 4816
ABN 68 799 811 816

Distribution

Palm Island Voice is published fortnightly and distributed free of charge on Palm Island and by subscription elsewhere. Current circulation is 520 copies.

Copyright

Copyright of text and images vests in The Palm Island Aboriginal Shire Council or with individual contributors as credited. No part of this publication may be reproduced without permission of the publisher or individual contributors.

Contributions

Contributions for publication are welcomed. Submission of contributions is taken as permission to print. Contributions may be edited. Submission of images of people implies their permission to publish the image has been sought and given.

Disclaimer

The views and opinions expressed herein are not necessarily those of the publisher, sponsors or editor. The publisher accepts no liability for any action taken based on information provided herein.

Where Do I Get a Copy of *Palm Island Voice*?

Pick up a copy every second Friday from:

- Council Reception
- Retail Store
- Hospital
- CDEP
- TAFE
- Airport

Palm Island Voice

Your community Your newspaper



Students Unveil Wall of Fame

The students of the Palm Island Aboriginal Shire Council School have unveiled a new 'Wall of Fame' in the school's main hall. The wall is a tribute to the many talented students who have excelled in their studies and sports. It features the names and photos of students who have achieved excellence in their fields. The wall is a source of pride for the school and the community.

Palm Island Voice

Your community Your newspaper



Kid's Creativity Comes Out Photography Workshops

The recent 'Kids to the Fore' photography workshop was a great success. The children took part in a series of workshops where they learned about photography and how to use a camera. They took many photos of their surroundings and their friends. The workshop was a fun and educational experience for all the children involved.

Palm Island Voice

Your community Your newspaper



Elders and Children March AGAINST ILLEGAL DRUGS

A group of elders and children from the Palm Island Aboriginal Shire Council took part in a march against illegal drugs. They carried a large banner that read 'NO MORE DRUGS'. The march was a powerful statement against the drug problem in the community. It was a day of solidarity and action for the elders and children of Palm Island.

You can also subscribe to *Palm Island Voice* and we will post you a copy. See Page 12 for information on how to subscribe.

SHAMEFUL ACT COULD HAVE CAUSED SOMEONE TO DIE

Officer in Charge of Palm Island Ambulance Service written the following report about an incident of theft and vandalism involving an ambulance and the serious consequences that could have arisen.

In the early hours of the 21st of December – the ambulance vehicle parked at the Ambulance residence in Dormitory Street had its front driver's side window smashed and ambulance equipment stolen.

The vandalism was only discovered when an emergency call was being responded to. This meant a delay was experienced for the patient as I had to run to the hospital to get another vehicle.

What possesses a person to steal from and damage a vehicle that responds to people within the community who are sick and injured – people who may be directly related to the offenders?

Thank you to the people who have approached myself and told me who was responsible for this vandalism.

These people will be dealt with by the court system – but the community was left with out an emergency response vehicle.

Someone could have died as result of this vandalism.

Why is an ambulance being targeted when we are here to help people?

I would ask the community to be vigilant and to report people who are seen to be interfering with an emergency vehicle.

If someone had died because of this vandalism it would have been murder or manslaughter as far as I'm concerned.

I am extremely disappointed to say the least. I have been here 8 years now and I really did believe that this community had a good rapport with the Queensland Ambulance Service.

The vehicle will be repaired and the equipment replaced. However, this does not lessen the seriousness of the fact that a life could have been lost due to this vandalism and damage.

We have had a extremely busy Christmas period with 71 cases being attended to during this time. With-



out an ambulance service here it would have meant that 71 people would have had to find their own way to hospital. More seriously, some of those people would have not made it alive to the hospital.

The Palm Island Ambulance service is your ambulance service. The community needs to look after it and respect the people who are here to make a difference in the lives of the people that we treat and transport to hospital.

All that know me know that I go over and beyond what a normal paramedic does – from giving people lifts home from hospital to running, motivational camps, holding First Aid Courses, helping at the hospital, and providing a service that is community friendly.

**Story from Ian Day Officer in Charge,
Qld Ambulance Service – Palm Island**

It's Back to School for Students at Palm Island Senior Campus

The new school year for Palm Island Senior Campus commenced on Tuesday the 29th of January



Year 11 students started on 29th January, and Year 12 students began on Wednesday the 30th of January.

Enrolments were taken on Thursday the 24th of January. However, if any person aged from 15 up to the age of 18 wishes to enrol at the campus, they can still do so.

But this needs to be done by Friday the 8th of February.

As well as the Numeracy, Literacy, Pathways, Sport and Recreation courses, students can select to do :

- Childcare
- Retail
- Hospitality
- Rural Operations
- Construction
- Automotive

If any person has any queries or wants to know more, call in at the Campus and speak to one of the teachers. Or you can call 4770 1875 for more information.

Story from Donovan Smith, Teacher, Palm Island Senior Campus

Send us *your* Stories



<u>Contributions Due</u>	<u>Publication Date</u>
08/02/08	15/02/08
22/02/08	29/02/08
7/03/08	14/03/08
21/03/08	28/03/08



Contact Catherine Lawler or Alfred Clay for further information.

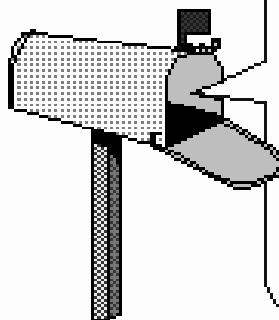
Telephone 07 4770 0215 or 07 4770 1177

Fax 07 4770 1305

email: editor@piac.com.au

Your community. Your newspaper.

Community Input For Land Tenure Project



As previously reported Department of Natural Resources & Water (NRW) are keen for members of the Palm Island community to have their say on this project.

As part of the project NRW have set up a suggestions box at Palm Island, located at the Government Coordinator's Office (the old kindergarten). Members of the community can use this box to provide written feedback and suggestions on the project.

Also, don't forget, if you have any questions about the project you are also welcome to call Ted Besley, the Acting Project Manager, on (073) 406 2270 or email him on ted.besley@nrw.qld.gov.au.

Palm Island Senior Phase of Learning Success in 2007, Growing in 2008

Palm Island Senior Phase of Learning has enjoyed success in its the first year and is set to build on this success to grow in 2008.

Congratulations must go to the first group of Palm Island students for completing their first year of senior schooling on the Island. This group of dedicated students will now be progressing through to their final year, well prepared for their future.

Through the representations of the community to the Government Champions, Mr Mal Grierson and Ms Linda Apelt, at Future's Directions community meetings in 2006 it was clear the community wanted a viable option for their young people to continue their learning and training.

In response, Government agreed to a two year trial of the Senior Phase of Learning on Palm Island and gave a commitment to consider a longer term options after a feasibility study.

2007 saw our students engage in a range of learning both on Palm, in Townsville and the Burdekin as part of their educational program.

Vicki Baylis, Regional Executive Director North Queensland from Education Queensland said "We are very proud of how these students have grown in knowledge, skill and confidence.

In 2008, we are anticipating another 25 – 30 students to enrol in the Senior Phase of Learning on Palm Island which will mean we will have about 60 – 70 young people engaged in further learning and training on the Island. With all of these students, teaching and training spaces became a priority."

In 2007, the Palm Island Council worked constructively with all levels of State Government to find space such that Palm Islanders can access a range of educational opportunities available.

For 2008, the upgrade of the old Council Depot will be completed so students will be able to undertake some of their

TAFE work in this centre, but more classrooms are needed to ensure that further education can be delivered on the island.

After consultation through the Future Directions meetings and in planning for 2008, the Palm

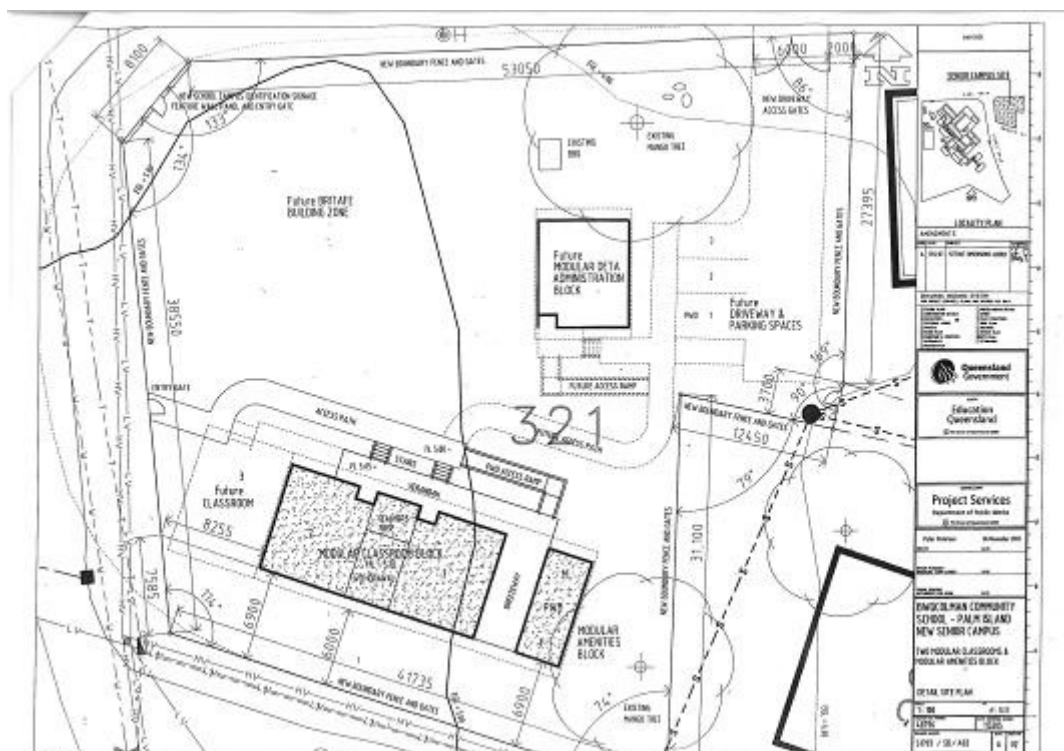
Island Aboriginal Shire Council proactively signed another lease to provide land for this additional classroom space. This land is adjacent to the Bwgcolman Community School Educational precinct on vacant land on the corner of Gribble and Park Streets.

Apart from the classroom the buildings will include a small covered area for the students and toilets as well. Weather permitting, these buildings will all be in place for the start of the 2008 school year.

Vicki also said that, "Staff will be working hard with this year's first group of Senior Phase students to ensure that they all have pathways beyond school at the end of the year either to work or further training. These young people are the future of Palm Island and we look forward to their continuing progress."

The Palm Island Aboriginal Council Mayor, Delena Oui-Foster with the support of other Councillors said that, "The support of families and the community has been a very important part of the success of this initiative in 2007 and we are appreciative of that ongoing support as we progress into 2008."

**Story from Department of Public Works
Project Services - Townsville**



LOOKING DEADLY AND FEELING GREAT

The Prize Winners for the first Kilo Busters competition held on Palm Island have been announced.

Congratulations to Luawana Blackley who was the overall winner of this inaugural competition .

Kilo Busters will be back this year, by popular demand. More details of what's in store will be provided in upcoming issues of Palm Island Voice.

There were plenty of prizes and lots of winners.

Winners can collect their prizes from Sandy at the hospital.

Check out the list on the right to see who is looking deadly and feeling great.

Story from Sandy Christiansen, JPHS

Left: Luawana Blackley, winner of Kilo Busters 2007



Category	Winner
Family Contribution	Gudgan and Anita Johnson
Most Attended	Nazareth Youngblutt
Attendance and weight loss	Bernadette Johnson
Weight loss	Latoya Williams
Attendance	Jolene O'Neil
Attendance and weight loss	Susan Morgan
Changing diet	Irene Thaiday
Attendance and weight loss	Fiona Ladd
Looking after Husband /diet patterns	
BSL improvement	Irene Thaiday
Weight loss	Melissa Lacy
Love of kids and for trying	Iki Dakeo
Attendance and weight loss	Susan Morgan
Most Attended	Flo Izzard
Awareness of Children's diet	Jessica Johnson
Weight loss and attendance	Bernadette Johnson
Love of kids and for trying	Iki Dakeo
Refusing rides to work and home	Theresa Creed

PCYC Has Plenty of Activities Coming Up

Palm Island PCYC has a number of exciting activities about to start and members of the community are invited to join the PCYC.

PCYC membership

Community members will need to become members of the PCYC to be involved in most of the PCYC programmed activities (most activities - not all).

Application forms can be picked up the PCYC. Costs are: Family membership \$55; Adult \$27.50; Student \$16.50; Senior \$5.

If people are having financial difficulties paying these fees please contact the manager for assistance.

Radio Course

PCYC will be running a radio course with 4K1G for anyone in the community interested in having a segment on the Bwgcolman radio. You must attend the course to use the radio equipment. The course is yet to be confirmed for the planned dates of the 6th or 7th of Feb. Please contact the manager if you're interested in attending.

Netball Competition

The Netball competition starts on Wed 20th Febru-



ary. Please contact the Sport and Rec officer Cameron Harris at PCYC for further information.

To be in the competition participants need to be PCYC members. Again, if you want to join in but are having financial difficulties paying membership fees please contact the manager for assistance.

Youth In Tune

The recently launched Youth in Tune program starts on 12th of February. If anyone is interested in learning an instrument please contact - Youth Officer Lavenia at PCYC.

**Story from Sgt Ben Walsh, Manager, Palm Island PCYC.
Picture from Ashley Lenoy.**

Another Attack on a Palm Ambulance

Unfortunately there has been another incident of theft involving our Ambulances. Some valuable and potentially lifesaving equipment has been stolen from one of the Ambulances.

The missing equipment is a Trauma pack. This is a large red pack filled with bandages and the like.

It was stolen from David Kain's Ambulance on the weekend of 19 and 20 January, while he was attending a patient.

Any information as to its whereabouts would be greatly appreciated and its safe return would even be better.

Queensland Ambulance provides important and lifesaving services to everyone in the community.

Queensland Ambulance Service paramedics are active members of the community and provide more than just emergency services

The vehicles, equipment and staff of the Ambulance Service all deserve our respect. There are many small communities who do not have the benefit of such valuable services and dedicated professionals.



Pictures: Ian Day at a health awareness picnic with young Palm Island women last year (top) and William Obah, Gemma Armitt, and Frank Conway at Jelly Fish 2007 the stinger information program organized by Palm Island Ambulance officers (below).

Put Your Business Here

Advertising space is available to all businesses, organisations and individuals who have an interest in promoting services and events to members of the Palm Island community.

Display Advertising Costs (including GST)

Full page	\$440
Half page	\$231
Quarter page	\$121
Eighth page	\$66
Sixteenth	\$44
Inserts	\$660

Discounts available for multiple bookings

Advertise in *Palm Island Voice* and support the community that supports you!

Contact us by Friday 8 February 2008 to arrange your advertising in the next issue of *Palm Island Voice*

Contact Catherine Lawler or Alfred Clay for further information
Telephone 07 4770 0215 or 4770 1177
Fax 07 4770 1305
email: editor@piac.com.au

Council Celebrates Season with D

To celebrate the festive season Council shouted out to everyone with a party consisting of a meal and cruise with Sun Ferries.

The party started with some formalities (see left)

But then the food was laid out, and drinks were served.

Then it was time for everyone to let their hair down.



ates Festive Dinner Cruise

l all of its workers to a Christmas party, con-

t).

served (see below).

own, and have some fun (see right).



Tell us what you think

Letters to the Editor

Tell us what you think.
About anything!
We'll keep it confidential if you
want.

Leave your letter at Council Re-
ception.
Or send us an email. edi-
tor@piac.com.au

Remember:
It's your community.
It's your newspaper.

Put Your Business Here

Advertising space is available to all businesses, organisations and individuals who have an interest in promoting services and events to members of the Palm Island community.

Display Advertising Costs (including GST)

Full page	\$440
Half page	\$231
Quarter page	\$121
Eighth page	\$66
Sixteenth	\$44
Inserts	\$660

Discounts available for multiple bookings

Contact Catherine Lawler or Alfred Clay
for further information
Telephone 07 4770 0215 or 4770 1177
Fax 07 4770 1305
email: editor@piac.com.au

**Contact us before Friday 8 February
to place your advertising
in the next issue of
*Palm Island Voice***

APPRENTICES AND TRAINEES

Palm Island has a strong commitment to ensuring community members are encouraged to take on apprenticeships and training.

The trainees and apprentices work very hard at both their on the job components of their course as well as the TAFE components.

In each edition of *Palm Island Voice* we will bring you the stories of a group of trainees or apprentices.

QBUILD CONNECTING WITH FAMILIES

As part of its commitment to its Palm Island Trainees, QBuild held a pre-Christmas Information Morning Teason 5 December, last year.

Trainee mentor, John Newbould, together with Rod Gear, Regional Manager for QBuild, hosted the event at the TAFE campus.

Families of apprentices and trainees working with QBuild were invited to come along and learn about what the young workers had been learning and doing during the year.

The progress of each individual trainee was discussed and information was provided on what will be happening in the training programs in the future.

Family members were invited to ask questions and provide feedback.

The event was part of QBuild's goal to work toward better understanding of the training process for everyone involved.

The aim was to help family members understand the challenges trainees face in meeting both work and learning commitments.

With this understanding, it is hoped families will be better able to help their young people to succeed in their training and employment.

Picture: QBuild Mentor John Newbould (left) works closely with Charlie Goldsmith from TAFE (right) to ensure trainees succeed in their studies



COMMUNITY BUS TIME TABLE AND INFORMATION UP DATE

The Palm Island Community Bus provides valuable service to the community.

To ensure the service runs efficiently and regularly, the bus runs to a specific timetable.

Keeping to the timetable is important so people know when they can expect it to arrive.

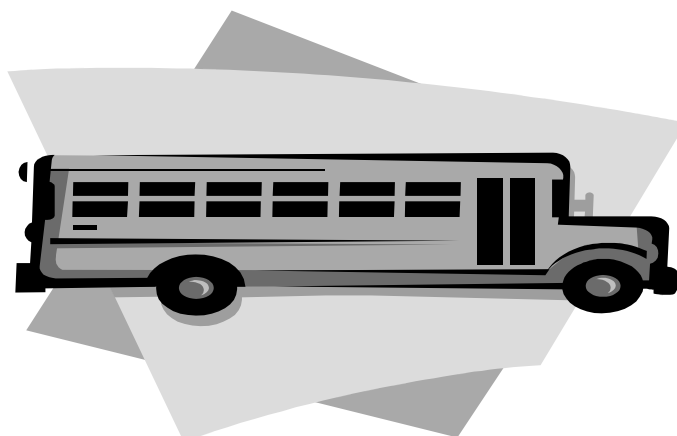
It also means they can be sure they will get to their destination on time.

To make sure the bus keeps to the time table it will not do unscheduled stops.

Also to help with running costs for this service, everyone using the bus will have to pay the full bus fare.

Morning	
TIME	SCHEDULED STOPS
7.00am	School Run
7.50am	Store – 10min wait
8.00am	Arrive Airport
8.40am	Departs Airport
8.45am	Store – 10min wait
9.00am	Chook City
9.05am	Farm
9.10am	Cook Town Area
9.15am	Hospital
9.20am	Store – 10min wait
9.35am	Butler Bay
9.40am	Reservoir
9.45am	Store – 10 minute wait
10.00am	Chook City
10.05am	Farm
10.10am	Cook Town Area
10.15am	Hospital
10.20am	Store – 10 minute wait
10.35am	Reservoir
10.40am	Butler Bay
10.45am	Store – 10 minute wait
11.00am	Chook City
11.05am	Farm
11.10am	Cook Town Area
11.15am	Hospital
11.20am	Store – 10 minute wait
11.35am	Reservoir
11.40am	Butler Bay
11.45am	Store – 15min wait

Afternoon	
TIME	SCHEDULED STOPS
12.05pm	Reservoir
12.10pm	Butler Bay
12.15pm	Arrive Airport
12.50pm	Depart Airport
12.55pm	Store – 10min wait
1.10pm	Chook City
1.15pm	Farm
1.20pm	Cook Town Area
1.25pm	Hospital
1.30pm	Store – 10min wait – No passengers
<i>1.40pm</i>	<i>KINDY RUN – SCHOOL RUN</i>
3.10pm	Store – 5min wait
3.20pm	Reservoir
3.25pm	Butler Bay
3.30pm	Store – 5min wait
3.40pm	Arrive Airport
4.15pm	Depart Airport
4.20pm	Store – 10min wait
<u>4.30pm</u>	<u>Bus Run Finished</u>



**Birthdays
New Babies
Funeral Notices
In Memoriam**

Tell us about them!

**We'll put them in
the paper.**

It's FREE!

**Leave a note with the details at
Reception in the Council's main
administration building.**

Or give us a call. 4770 0215

Put Your Business Here

Advertising space is available to all businesses, organisations and individuals who have an interest in promoting services and events to members of the Palm Island community.

Display Advertising Costs (including GST)

Full page	\$440
Half page	\$231
Quarter page	\$121
Eighth page	\$66
Sixteenth	\$44
Inserts	\$660

Discounts available for multiple bookings

Contact Catherine Lawler or Alfred Clay
for further information
Telephone 07 4770 0215 or 4770 1177
Fax 07 4770 1305
email: editor@piac.com.au

**Advertise in *Palm Island Voice*
and support the community
that supports you!**

**Contact us by 8 February 2008 to arrange your
advertising in the next issue of *Palm Island Voice***

✂ SUBSCRIPTION COUPON

Don't live on the Island? DON'T MISS OUT!

Subscribe to ***Palm Island Voice*** Now!
\$2.20 per issue (including GST)

YES! I want to Subscribe to ***Palm Island Voice***:

- ☐ 13 issues at a cost of \$28.60 or
☐ 26 issues at a cost of \$57.20 (tick one)

My Details are:

Full Name: _____

Address: _____

SUBSCRIBE IN THREE EASY STEPS



- Complete this Form
- Make your Cheque, or Postal Order payable to Palm Island Aboriginal Council
- Send this Form and your payment to:
Palm Island Voice
C/- Palm Island Aboriginal Council
Main St
Palm Island QLD 4816

☺ Keep a copy of this form for your tax records if necessary.

GST

This document will become a Tax Invoice for GST purposes when payment is made.
Palm Island Aboriginal Council
ABN 68 799 811 816



Palm Island Ambulance

First Aid Hints and Tips

Abdominal Pain

Acute abdominal pain is a general term for a multitude of abdominal conditions

Signs and Symptoms of acute abdomen

Abdominal Pain
Nausea and vomiting
Raised temperature
Abdominal rigidity – the abdomen feels hard – should be soft
Diarrhoea
Shock
Bleeding – PV (per vagina) PR (per rectum)
Increased heart rate – rapid pulse
Increased breathing rate
History of assault or trauma

Management – What To Do

- Place the patient in a position of comfort – a position that they feel is right for them
- Rest and reassure the patient
- Do not give food or water
- Check their pulse and breathing
- Call 000 and request an ambulance
- Treat the patient for shock

Many people on the island have had the gastro bug – with high temps nausea, vomiting and diarrhoea.

Most times lots of fluid and panadol will help and it may take several days to get the bug out of your system.

You can treat this bug at home, but see the Dr if required, or call the ambulance if you are concerned that the patient is not getting any better.

Stinger Season Count Palm Island Number – 16

*Swim Safely
Wear a Stinger Suit
Or
Long Sleeved Shirt and Long
Pants*



STINGER FIRST AID

- Protect yourself from being stung.
- Pour Vinegar liberally over the sting site. Up to 8 litres may be required.
- If you don't have vinegar and are able, go to the nearest Vinegar Station.
- Make the person comfortable
- Protect airway, breathing and circulation
- Ring the Ambulance on **000**
- **DO NOT** wash the area with fresh water

Stinger Box Houses

Stinger Box houses have First Aid facilities for treatment. They are at premises close to the beach. Look for this sign.



WANT TO GIVE UP GROG, SMOKES AND YARNDI? ATODS can give you advice on how to start

The team at ATODS hopes everyone had a great Christmas and New Year. They have some tips and advice for those who want to cut back on grog, smokes and yarndi.

Many people have come to ATODS after New Year to advise that they plan on giving up those things that they know are doing harm to their health and general well being.

Set limits to cut down on grog

Some drinkers have said that they want to cut down. Great news.

Remember the safe limit for women is no more than 2 standard drinks a day on average and if having a party no more than 4.

A standard drink is one gold beer.

For men it should be no more than 4 a day on average and if having a party, no more than six.

There should be at least 2 to 3 days grog free in your week.

A great way to help yourself is to set a limit, stick to it, have a feed before drinking and make sure you drink water between and after drinks.

Don't forget that there is no safe limit for drinking for pregnant women.

Alcohol has serious affects on the growth and development of the baby in the womb. Please don't drink whilst you are pregnant.

Reducing smokes first step to quitting

For the cigarette smokers a great way to start is to reduce the amount that you smoke.

Make it a plan that you will not ask others for a cigarette when you run out.

Talk to the people in your house and make a house plan that nobody smokes in the home or around the children.

Smoking causes as much harm as the grog. If you want to take it the next step to stop completely, come in and have a yarn with us at ATODS.

Slow down on yarndi, cut the spin, avoid buckets

For the yarndi smokers we encourage you to think about stopping. It is also bad news to your health and to your money.

Think about slowing down, stretch out those times between when you smoke.

Cut out the spin and avoid using buckets. If you

having problems ceasing we would be more than happy to develop a plan with you.

Goodbye Julie, Welcome back Jenny

Sadly Julie has finished working with us on Palm moving up to Cape York. Thanks to Julie and all the very best with the move. We welcome back Jenny Brazier to Palm who has worked here previously.

From the ATODS Team, Jenny, Craig and Uncle Owen, all the very best for this year and with your plans.

Story from Craig Thorssell, Social Worker, ATODS



Clinics to be Held for Womens' Health

The Women's Health Nurse will be holding clinics in Community health on the following dates

Tuesday	12 th February	9am - 3pm
Tuesday	11 th March	9am - 3pm
Tuesday	25 th March	9am - 3pm
Tuesday	15 th April	9am - 3pm
Tuesday	29 th April	9am - 3pm
Tuesday	13 th May	9am - 3pm
Tuesday	27 th May	9am - 3pm
Tuesday	10 th June	9am - 3pm

No appointment is needed. Please feel free to visit the nurse to discuss any Women's Health issues. Please contact the clinic on 47- 52 5165 for further information.

PALM ISLAND COMMUNITY HEALTH CALENDAR

Joyce Palmer Health Service

Doctors Appointments

Doctors run clinics Monday to Friday 8 am to 5 pm.

See the administration staff for appointments

Pharmacy

Mon, Wed Thurs, Fri

10am to 1 pm

2pm to 4.30 pm

Tuesday only close 6.30 pm

Dressing Clinic

8am to 4pm Monday to Friday only – unless it is an emergency

Dental Clinic

Tuesday every week in the Community Health Area. You need a current **Health Care Card** or **Pension card** to be eligible for this service. Come up between 9-10am to have your problem looked at. Then you will be booked in for an appointment at the next available clinic.

Physiotherapy

Physiotherapist visits every Wednesday. Contact the hospital to make and appointment.

Renal Clinic

The Renal Specialist (nephrologist) visits every two months, and clinics with the Renal Dietician and Social Worker are held every month. If you have been referred as a patient, the clinic will contact you with details of your appointment.

Paediatrics Clinic

The Paediatrics Clinic is held monthly at JPHS. Contact the hospital for more details.

Speech Therapy

The Speech Therapist visits Palm Island every month. Contact the hospital for more details.

Eye Clinic

The Optometrist visits once a month and the eye specialist (ophthamologist) comes twice a year. Contact the hospital for more details.

Diabetes Clinic

The Diabetes clinic is held monthly. Contact the hospital for more details.

Podiatry

The podiatry clinic is held every month. Contact the hospital for more details.

Mental Health Team

The Mental Health Team Office is open from 8.30am to 4.30pm. Phone 4753 5163. The Team can help with mental health assessment, crisis intervention, case management, consultation and liaison with persons presenting to JPHS emergency department, court liaison, Individual counselling and family therapy.

Child Health Clinic

Aggie is available from 8am to 4.30 Monday to Friday to provide help with child health problems issues such as immunisation and baby health checks. Also provide help for some women's health issues and family counselling. Ring on **4752 5172** or call in anytime.

Midwife Clinic

The midwife is available every Tuesday and Friday from 8.30am till 3.30pm. She can provide pregnancy testing, antenatal care and education, organise ultrasounds, offer postnatal care, contraceptive advice and help with women's health issues. Call 0437 550 171 or just come up and see her.

Sexual Health Clinic

Rachel, and Frank are in the office 8am to 4.30pm Monday to Friday. The clinic is open late on Tuesday nights till 6.30pm. No appointment is needed.

We provide advice, treatment and management of any sexual health issues.

You can go to the clinic if you need help or advice about any aspects of women's health. The team can help with information about issues such as contraception, menopause, or protecting yourself against diseases that may cause infertility.

Women's Health Nurse

The Women's Health Nurse will be holding clinics in Community health on the following dates

Tuesday	12 th February	9am - 3pm
Tuesday	11 th March	9am - 3pm
Tuesday	25 th March	9am - 3pm
Tuesday	15 th April	9am - 3pm
Tuesday	29 th April	9am - 3pm
Tuesday	13 th May	9am - 3pm
Tuesday	27 th May	9am - 3pm
Tuesday	10 th June	9am - 3pm

No appointment is needed. Please feel free to visit the nurse to discuss any Women's Health issues. Please contact the clinic on 4752 5165 for further information.

REMEMBER: If you come for your regular pap smear, we can **prevent** cervical cancer. If you are under 26 years you can be eligible for a free Gardasil vaccination, which can help protect you against cervical cancer.

ATODS

The Alcohol, Tobacco and Other Drugs Service has counsellors available to help with drug related issues, free of charge.

Users or members of their families who are worried about the impact drugs are having on their lives you can come and yarn to Craig, Julie or Uncle Owen about what to do.

Palm Island Voice Community Notice Board

AA Meetings at Ferdy's

AA meetings to help support people with drug or alcohol problems are held at Ferdy's.

Meetings are held both day and night Meeting times are 9am and 7pm. Call day staff at the centre in the morning to be picked up for the 7pm meeting.

Palm Island Play Group

All family members with children aged 0 – 5 years old are invited to come along the Palm Island Play-group.

DATE: Wednesdays

TIME: 10.30am – 12.30pm

WHERE: PCYC child care room

Contact **Tiana Friday** – PCYC 4770 1793 or 0438 717 607 **Svea Pitman** 4770 1828 or 0423 158 368. Supported by the Palm Island Family Support Hub.

Rubbish Pick Up Times

Area	Day
Chook City & Farm	Thursday
Mango Avenue	Monday
Top End	Tuesday
Bottom End	Wednesday
Reservoir Ridge & Butler Bay	Friday

Computing Class

Every Monday at the Bwgcolman State School. Beginners are welcome. Contact Charlie or Rani at the seaside TAFE campus. Telephone: 4770 1200.

Council Holiday Closure

The Palm Island Aboriginal Shire Council offices will be closed over the holiday season.

Council offices will be closed from 21 December 2007 to 2 January 2008 inclusive.

Learner's Permits

Courses to assist students who are sitting for their Learners permit are held monthly on Palm. This course has an extremely high success rate.

If you want to do the course you need to enrol at TAFE. You will need your birth certificate & other ID. Contact TAFE for details of course dates for 2008.

Blue Cards

Construction Induction (Blue Card) is conducted by TAFE on Palm Island. This card is a requirement when working on a building site but is also gives a good sound knowledge of the Workplace Health and Safety Act, Safe work practices and Risk Assessment.

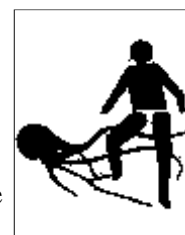
It is a three to four hour course and on completion students are issued with a General Safety Induction card. Enrolments are taken at TAFE.

Contact TAFE for details of course dates for 2008.

Stinger High Season

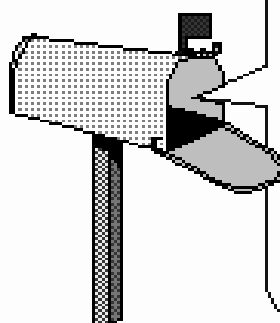
November to April

- Wear a **Stinger Suit**.
- Primary **First Aid** is **Vinegar** not water or ice.
- **Stinger Box Houses** have First Aid facilities for treatment. They are at premises close to the beach. Look for this sign.



Land Tenure Project Suggestions Box

Have your say on the Land Tenure Project. You can submit written feedback and suggestions using the suggestions box, located at the Government Coordinator's Office (the old kindergarten).



Send us *your* Stories



<u>Contributions Due</u>	<u>Publication Date</u>
08/02/08	15/02/08
22/02/08	29/02/08
7/03/08	14/03/08
21/03/08	28/03/08



Contact Catherine Lawler or Alfred Clay for further information.

Telephone 07 4770 0215 or 07 4770 1177

Fax 07 4770 1305

email: editor@piac.com.au

Your community. Your newspaper.